

# RFM

## THE MIDLANDS MART

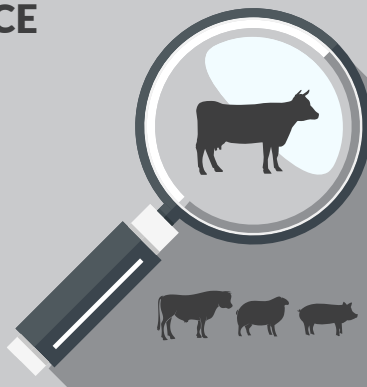
— RUGBYFARMERSMART.COM —

The Charolais Pavilion, Avenue M, Stoneleigh Park,  
Kenilworth, Warwickshire CV8 2RG  
02476 697731 | [www.rugbyfarmersmart.com](http://www.rugbyfarmersmart.com) | 43/139/8013  
Office hours: Monday to Friday - 9.00am - 5.00pm  
Opening Time: Gates open at 5.30am until further notice

## MARKET REPORT FOR MONDAY 7th AUGUST 2023

### MARKET AT A GLANCE

Prime Steers to 329p/kg & £2041  
Prime Heifers to 334p/kg & £2100  
Prime Bulls to 225p/kg & £1418  
Cows to 182p/kg & £1658  
Prime Lamb SQQ 270p/kg (1677 p/  
kg & £118.50)  
Prime Lambs to 324p/kg & £180  
Ewes to £200 (1023 Avg £108)  
Calves to £350 (36)



## THURSDAY 10TH AUGUST SALE OF STORE CATTLE & STORE LAMBS

Catalogues & Entry Forms available by post, email or on the website  
[www.rugbyfarmersmart.com](http://www.rugbyfarmersmart.com) | [admin@rugbyfarmersmart.com](mailto:admin@rugbyfarmersmart.com)

## CATTLE: 126 FORWARD



Primestock Sale of Cattle.

90 Cattle forward consisting of  
38 Steers  
44 Heifers  
2 Young Bulls  
And 6 overage cattle.

A very varied show of Cattle forward with a higher percent of lesser ended Cattle forward and more weight seen.

Andrew Bishop still finding the quality topping at 334 ppk for a Heifer with others close behind at 328 and 322. J Cooper of a Coventry a sweet Lim Heifer to 299ppk. In the steers again A Bishop topping at 329ppk, and 319. L Haskell Farms selling Steers to 301ppk and the Coopers to 300ppk.

Per head in the heifers it was Robert Nichols still breaking the £2000 barrier at £2099 and £2047. The Baxter family also to £2013 and Ratcliffe Farms to £1900.

Steers per head DR&JC Bennett topped the day at £2041 and £2011. With the Walters family selling to £1888.

Cows feeling the worst if the recent decline in trade with a good Cow selling to 182ppk. And stock bulls to £1657

**Auctioneer: Emma Coupland (07808 271218)**

V

**PLEASE COULD ALL VENDORS BOOK IN STOCK,  
EITHER BY A QUICK CALL, TEXT OR EMAIL THANK YOU!**

Office: 02476697731 | Email: [admin@rugbyfarmersmart.com](mailto:admin@rugbyfarmersmart.com) | Tom: 07774723758

### *Photograph Request*

***Rugby Primestock Society are after any old pictures from past Rugby  
Primestock Shows for this year's 50th anniversary.***

***please could copies be emailed to [Sophie admin@rugbyfarmersmart.com](mailto:Sophie.admin@rugbyfarmersmart.com) or  
sent to the market office. We can scan the photos and return the originals.***

## STEERS & BULLS

Top prices per Head				FA
Blonde	756kg	£2041	DR & JC Bennett	Y
Blonde	682kg	£2011	DR & JC Bennett	Y
Limousin x	672kg	£1888	DTP & PA Walters	Y
Limousin	642kg	£1884	PC & RA Nichols & Son	Y
Limousin x	762kg	£1874	D Collins	Y

Top prices per Kilo				
Limousin x	486kg	329ppk	A Bishop	Y
Limousin x	496kg	319ppk	A Bishop	Y
Limousin	578kg	301ppk	LM & V Haskell Farms	Y
Blonde	546kg	300ppk	J Cooper & Son	Y
Limousin x	634kg	295ppk	RW & HER Trivett	Y

## HEIFERS

Top prices per head				FA
Charolais x	758kg	£2099	RF & JA Nichols	Y
Charolais x	716kg	£2047	RF & JA Nichols	Y
Limousin	714kg	£2013	F K Baxter	Y
Limousin x	792kg	£1900	Ratcliffe Farms Ltd	Y
Limousin x	646kg	£1886	RW & HER Trivett	Y
Top prices per kilo				
Limousin x	485kg	334ppk	A Bishop	Y
Limousin x	506kg	328ppk	A Bishop	Y
British Blue	506kg	322ppk	ABishop	Y
Limousin	480kg	300ppk	J Cooper & Son	Y
Limousin	516kg	299ppk	J Cooper & Son	Y

## Len Eadon 1999-2022 Tribute page

<https://leneadon.muchloved.com/?fbclid=IwAR1QM9qsvxqscmyehDUuwJvjrR4KICliDqyezWbDYBEAsDaB164bZn50g4>

## COWS

Top prices per head Cows					FA
Simmental (Bull)	1098kg	£1657	T Barber & Son		Y
Limousin x	846kg	£1539	J & IJ Tivey		Y
Hereford	716kg	£1152	I C Markham		Y
Top prices per kilo					
Limousin x	846kg	182ppk	J & IJ Tivey		Y
Hereford	716kg	161ppk	I C Markham		Y
Simmental	1098kg	151ppk	T Barber & Son		Y

## SPRING LAMBS: FORWARD SQQ 270P/KG AVG £118.50



Lambs; In truth a yard as short on meat as we have ever seen forward today. The Weekends deluge washing the backs off many. Trade though a lift throughout the Country and an SQQ of 270p/kg. Better meat Lambs regularly 280 - 290p/kg and shape over 300p/kg. Lean Lambs trading 260 mark and the many lean today skewing the Average. Better end to 324p/kg from K Attfield and 319p/kg for Beltex from P Incley whilst 39kg 318p/kg from IM Allen & Partners. Weight and price 302p/kg for Humphrey Livestock. Weight still the best commodity seemingly as these Lambs a much better finish and much easier to sell. Topping at 293p/kg for 46kg from WH & R Weston with 55.5kg to a massive 288p/kg from K Attfield and CR Hill 49kg to 284p/kg with MM Clarke & Sons churning out the weekly supply of properly finished lambs to see 282p/kg at 47.5kg. An all in Avg of £119 a marvellous return for the Summer Months, Export weights topping at £130 for 43kg from Humphrey Livestock and John Barnett 43kg to £128 with Ted Taylor 42kg to £127. S Wise 44kg to £126 for Texels. In the lump a massive Top today at £180 for 76kg Charolais from G Fell also selling 70kg to £166. T M Paton sold Lley to £164.50 for 62kg. and K Attfield £160 on three occasions.

Trade a bit more bite throughout but lambs lacking finish. A massive premium today for full meat lambs.

**Auctioneer: Thomas Wrench**

Sunday lairage is now open from 9am-3:00pm  
Gates close 3:00pm **STRICTLY.**

## PRIME LAMBS SQQ 270p/kg

### Per Kilo **under 45.5kg**

Char	37.00kg	324ppk	K Attfield
Texel	37.00kg	319ppk	PJ Incley
Beltex	39.00kg	318ppk	IM Allen & Partners
Texel x	39.00kg	308ppk	G Bell
Beltex	38.00kg	305ppk	IM Allen & Partners

### Per HEAD

Texel	43.00kg	£130.00	Humphrey Livestock
Beltex	43.00kg	£128.00	J Barnett
Char	42.00kg	£127.00	EJ Taylor & Son
Texel	44.00kg	£126.00	S Wise
Texel	44.00kg	£125.50	RFM

### Per Kilo **over 45.5kg**

Texel	46.00kg	293ppk	W H & R Weston
Char	56.50kg	288ppk	K Attfield
Texel	49.00kg	284ppk	C R Hill
Char	47.50kg	282ppk	MM Clarke & Sons
Char	46.50kg	280ppk	MM Clarke & Sons

### Per HEAD

Char	76.00kg	£180.00	G Fell
Char	70.00kg	£166.00	G Fell
Texel	62.00kg	£164.50	T M Paton & Sons
Texel	63.50kg	£164.50	T M Paton & Sons
Char	56.50kg	£160.00	K Attfield

**\*\*FAT CATTLE TIMINGS\*\***  
**COWS 8:30AM**  
**PRIME CATTLE 9AM**

## CULL EWES: 1023 FORWARD



Ewes; 1023 forward and more men at ringside and trade to prevail with heavy Ewes in high demand so much so some from the Fair to today catching over £30 per head. Top today the first two pens through with a pen of 5 Texels from R Kellett at £200 and others £193. Messrs Claridge fresh from massive success at the Breeding Ewe Sale last month selling 14 Texel Ewes to £182. Charolais to £160 from W McCurdie and Texels to the same equal with Mcmillan down from Cheshire. Tex x to £158 from J Powell, Droitwich and Tex x regularly £140 upwards. Suffolks to £146 from Leam Farms for large pens full and £144.50 for very Similar from RAE Wilson and Grove Farms. Suffolks generally £130 plus if meat and weigh albeit in short Supply. Mules again a massive trade if meat topping at £141 for R B Lewis and £133 for RAE Wilson. Messrs Humphrey Livestock £126.50. Mules generally £112 plus if meat. Lean Ewes remain a hard sell and maybe a cost effective alternative to Store Lambs.

**Auctioneer:** *Thomas Wrench*

### EWES

Texel	£200	R Kellet	Texel	£172	R Kellet
Texel	£193	R Kellet	Char	£160	WW & JA McCurdie
Beltex	£182	AEJ & FJ Claridge	Texel	£160	C McMillan

## STORE LAMBS: 87 FORWARD



Store Lambs remain a fast trade and are wanted, with farmers having grass and hopefully fat prices set to rise

Top price today was achieved by Mr N Franklin and his Texel lambs realising £115

Overall average again over £90 and £90.76

Next Sale this Thursday 10th August 11am

**Auctioneer:** *Tim Webster*

# CALVES : 36 Forward



## Baby calves : 23 Forward

Good to see a packed ringside for today's sale, a small sale, the calm before the storm of Autumn Calving.

Quality calves forward today from ECC, Messrs EB & BM Sutton, Peter Hemmings, Phil Dyson, etc

Top price today was £350 twice for EEC and his British Blue Bulls

British Blue Bulls	£345 to £350
Hereford Bulls.	£295 to £330
Hereford Hfrs.	to £200
Simmental Bulls	£280 to £325
Simmental Hfrs.	to £270
Limousin Bulls.	to £295
Limousin Hfrs.	to £325
Angus Bulls.	to £250
Sussex Bulls.	to £80
Sussex Hrs.	to £62
Friesian Bulls.	to £48
Holstein Bulls.	to £20
Highland Bull.	to £25

Next sale 21st August and is the StowAg Show and Sale

## Weaned Calves : 13 Forward

Pete Amor topping today's sale with a 4mo Saler x Steer at £490

Mark Peebles had a good bunch of Hereford Stirks forward which were keenly sort after

4mo Saler Steers.	to £490
4mo Saler Hfrs.	to £400
4mo Hereford Str	£320 to £330
4mo Hereford Hfr	£310 to £380
4mo Angus Steers.	to £200
2mo Angus Hfrs.	to £170

Next sale 21st August 11am

**Auctioneer :Tim Webster**



# Farm insurance, the way it should be

We're a family-run business and pride ourselves on forging long term relationships with our farming and agricultural clients. Covering the Midlands, South West and South East, we deliver an extensive range of farm, agri business and equine policies tailored to you.

Farm & Equine **01865 290915**

General **01865 844998**

 Follow us **@County\_Farm**

[www.county-insurance.co.uk/farms](http://www.county-insurance.co.uk/farms)



Independent Insurance Brokers County Insurance Services Limited. Address and Registered Office: County House, Glyme Court, Langford Lane, Kidlington, Oxon OX5 1LQ. Authorised and regulated by the Financial Conduct Authority (FCA) (FRN: 597267). Company registered in England No. 08411634



# Harvest Hoolie

## Barn Dance

LIVE BAND!



# Sat 7th Oct 2023

## £15 A TICKET

Includes a ploughman's platter supper

BAR FROM 7PM

DANCING FROM 7:30PM

Lodge Farm, Chesterton, CV33 9LG

Contact [HARVESTHOLIE@GMAIL.COM](mailto:HARVESTHOLIE@GMAIL.COM)

for other queries please ring 07903193615

In aid of the Air Ambulance, Motor Neurone Disease Association,  
and St Giles' Church



Dear All,

As the majority of you will all know (and I'm sure fed up with hearing now), 2022 was one of the worst years of my life. I was diagnosed with stage 4 Hodgkin Lymphoma and had to start treatment in less than 2 weeks from diagnosis. I had to stop my work in the market and turn to a life of being at home a lot and dealing with being quite poorly. My treatment was 6 months of bi-weekly chemotherapy consisting of 4 drugs each time. Since my diagnosis I have been absolutely blown away by the support, concern and love shown to me by the RFM community of which I have been part of since it opened in 2008. Support from messages, charity donations, well wishes and general concern has been one of the key things to have gotten me through.

The donations to Cancer Research and Lymphoma Action from RFM sales really has touched my heart and just show what an amazing industry we are a part of.

The worst part of the whole Cancer journey for me was losing my hair. It is at this point that you lose your identity, femininity and it is when everyone in the world can see you are unwell. It was something that took a long time to come to terms with and accept.

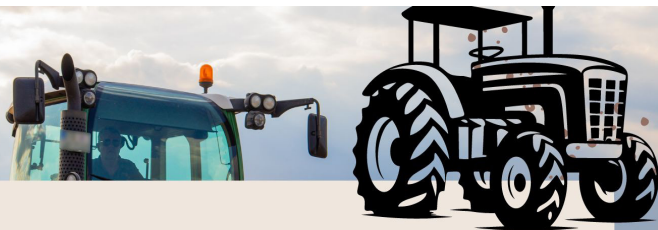
One whole year on, to receive a surprise visit to London, to be driven in a taxi to an unknown location and then told that the RFM community had come together again for me quite literally took my breath away... I was speechless for once! I was privileged to have a complete hair makeover by the very best in the business, hair stylists and colourists to the stars. They treated my like a queen for 3 hours and it was a lovely although indulgent experience. It will never look that good again, but it was the first time since losing my full head of hair that I actually felt good again.

I cannot thank any of you enough and especially to Roger Coombes for orchestrating the whole thing. I'm not quite sure what it is that makes you all feel like you want to support me like you have done but I can quite honestly say I am forever grateful and still do not really know how to thank you all.

Sophie Mockler

Thank you all SO much. RFM The Midlands Mart.....The best in the Biz.

**RFM**  
THE MIDLANDS MART



## MACHINERY AUTUMN SALE

### FRIDAY 27TH OCTOBER

CONTACT 02476697731 OR EMAIL  
[ADMIN@RUGBYFARMERSMART.COM](mailto:ADMIN@RUGBYFARMERSMART.COM)  
TO BOOK IN YOUR ENTRIES





Fertility



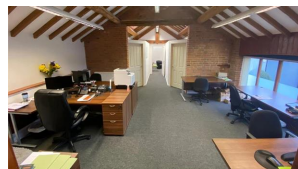
Health Planning



Lameness



Infectious Diseases Consultancy



Mastitis



TB Testing



In House Lab Testing

Tel – 01455241080  
Email – [info@fossewayfarmvets.co.uk](mailto:info@fossewayfarmvets.co.uk)



“We are a growing farm vet practise covering much of the East Midlands. We have new team members on board and have the capacity to take on new farm clients. We'd love to talk to you about your livestock health and farming business – please call the office in 01455241080 if you'd like to speak to one of the team.”



**Grove Farm, Wolston, CV8 3HP**

**TO LET ON 5 YEAR FBT  
FROM 1<sup>st</sup> October 2023**

A productive small farm with a set of modern and traditional farm buildings set in approximately 19.85ha (49.05 acres) of pasture and arable land.

Viewing date- Tuesday 15<sup>th</sup> August 2023 2:00pm – 6:00pm

Please contact the agents for further information

**All enquiries: 01926 492511**

[harriet.thompson@Godfrey-Payton.co.uk](mailto:harriet.thompson@Godfrey-Payton.co.uk)

[www.godfrey-payton.co.uk](http://www.godfrey-payton.co.uk)

## Breeding Sheep July 28th



Our first Sale of the Year saw less numbers than we expect as many Ewe Lambs simply not kept in last years drought. Trade up on the year across the Board albeit some Sheep looking a little backwards with last years hard time having taken effect.

Starting with the Aged Ewes, real interest as local and Welsh Border buyers went toe to toe. Suffolk FM Ewes set us off at £153 and £150 for M & AW Wright with others £145. Texels from the Same £150 and £145. On to the Mules and Buyers travelling specifically to meet the NCM draft Ewes from Alan and Jemima Collett. This good run saw large pens at £150.50 and £150 with others to £140.50 whilst those just weaned to £139. Lean working Ewes regularly £120 mark. As ever into the White Faced Sheep and a real scramble for the Truer Blooded Texels with M & C Morris seeing Theaves to £200 and Beltex £182. R & S Farming down from Oakham sold Charollais Theaves to £192. C Clayton presented his sheep wonderfully to see Tex x Cheviots at £222. Runs of Tex x then trading £160 - £180. Messrs Claridge though brought Silence to the ring when selling some super pure Texel Theaves selling to £300 for a pen of 5 with 5 others to £222 resulting in an avg of £179 across the White Faces Sheep. Suffolks a nice trade if not on fire. Waddesdon Estates Ltd showed a super showing with Pens to £185, £182 x2, £181 x2 and £180x2. JL Barnes equalling £182 with their run also. Messrs Aries always have a following and this year a top in his run for Suffolks x Scotch Mules selling to £185 x 2 and others £182. M J Woodward though topping the section selling Suffolks to £190. Mules the trade of the day for the quality on show. All ran dry today but selling to £190 on two occasions for the Foster Family Trust with Waddesdon to £170.

A trade that perhaps was honours even to Buyers and Sellers. Many more expected in August

***Auctioneer : Thomas Wrench***

On instructions from The Executors of Mr Norman Astley.

A complete smallholder's dispersal sale at  
Croftlands Farm, Broadwell, Rugby, Warwickshire, CV23 8HB.

To include: 1962 Fordson Dexta Tractor,

1975 Zetor 5718 Tractor, c.1998 Aebi Rasant Combi-Track, 1947

Ransomes roller mower, 1982 Same Antres II 130hp tractor.

Together with: 1932 George Fowell dumper truck, 1953 JCB 2B Digger,

2008 LDV Maxus van, 2004 Peugeot 206 commercial van,

2001 Seat Leon Car, 1998 LDV Convoy Pick up.

Plus: Trailers, Vintage Farm Equipment, Rural Bygones, Livestock

Equipment, Garden Equipment, Agricultural Requisites,

Workshop/Warehouse Equipment.

FOR SALE BY AUCTION ON SATURDAY 19TH AUGUST 2023 AT 10.30AM.

---

## FORTHCOMING AUCTION:

On behalf of Andrew Baughan and others.

A collective machinery sale at Oak Farm, Upper Boddington,

Nr Daventry, NN11 6DW

on Saturday 7th October 2023 at 10.30am.

Entries are invited.



# WE COVER SMALL FARMS, LARGE FARMS AND EVERYTHING IN BETWEEN



From sheep farmers to arable farmers.  
Flower growers to poultry farmers.

NFU Mutual is proud to insure over 75% of UK farms with our Farm Select insurance. But we want more farms to benefit from great cover and local service. NFU Mutual has introduced Farm Essentials insurance – designed to meet the needs of smaller farms.

As your local agency, we are close by and can provide expert advice and hands-on support when you need it.

Call **Coventry Office** on **02476 444519**

NFU Mutual, 6 Eastwood Business Village,  
Harry Weston Road, Binley Business Park,  
Coventry, CV3 2UB



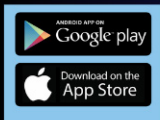
**NFU Mutual**  
FARM INSURANCE



**In Partnership with Herdwatch**

**The UK's no1 livestock management software**

- ✓ All your farm records in one place
- ✓ Spend less time on farm paperwork
- ✓ Advertise your cattle for sale on Herdwatch



**Display your AD to over 20,000  
farmers before bringing them to  
RFM – The Midlands Mart**

**FINISHING CATTLE? GROWING CATTLE? FEEDING SHEEP?**

**BERRYSTOCK  
FEEDS**



**Do you want HIGH PERFORMANCE, COST EFFECTIVE, FULLY  
ASSURED and COMPLETE FEEDS? Then contact BERRYSTOCK FEEDS:**

Tel: 01788 890320 E-Mail: [john@berryfieldsfarm.co.uk](mailto:john@berryfieldsfarm.co.uk) Web: [www.berrystockfeeds.co.uk](http://www.berrystockfeeds.co.uk)

**BERRYFIELDS FARM, DAVENTRY, NN11 8NP**



**THE MIDLANDS MART**

---

RUGBYFARMERSMART.COM

---

## **FORTHCOMING SALES**

**THURSDAY 10TH AUGUST  
SALE OF STORE CATTLE & STORE LAMBS**

**Vendors who are wishing to sell stock  
please feel free to contact:**

**Tom Wrench** - 07774 723758 Market Manager & Auctioneer

**Tim Webster**- 07437 101163 Auctioneer & Fieldsman

**Emma Coupland**- 07808 271218 Fat Cattle Auctioneer

**Charlie Betteridge**- 07760266701 Fieldsman

**Nathan Shaw**-07460120293 Yard Manager

who will gladly make

**A FREE ON FARM VISIT & VALUATION**



---

**Follow us on social media:**

Facebook & Twitter - @RFMMidlandsMart

Instagram - rugbyfarmersmartLtd